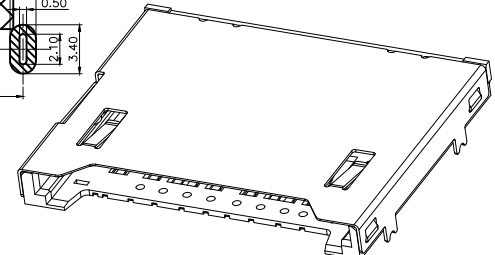
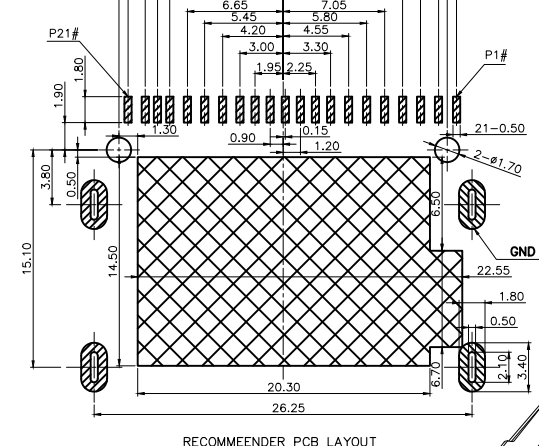
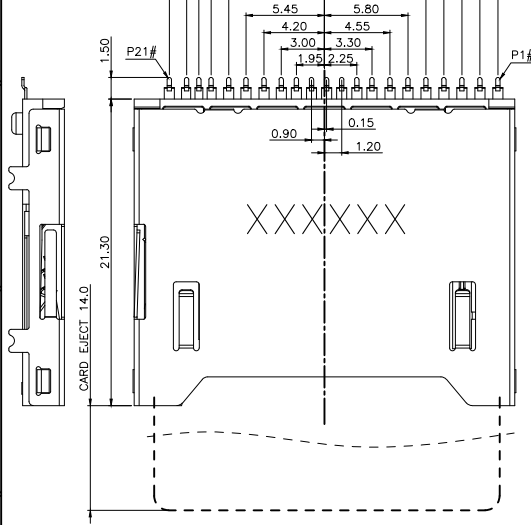


RoHS Compliant HF

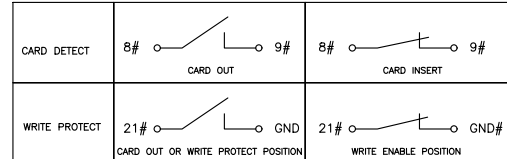
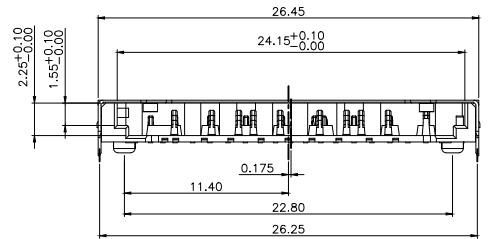
REV.	ECN.NO.	MODIFY.CONTENT
A		NEW



RECOMMENDER PCB LAYOUT  
TOLERANCE UNLESS OTHERWISE IS ±0.05

PIN DEFINE:

SD Mode			UHS-? Mode			SD Express Mode		
PIN#	NAME	DESCRIPTION	PIN#	NAME	DESCRIPTION	PIN#	NAME	DESCRIPTION
1			1	VSS3	Supply voltage ground	1	VSS3	Supply voltage ground
2			2			2	RESERVED	Reserved Area for future pad extension
3	DAT2	DATA LINE BIT2	3			3	CLKREQ#	Reference clock request signal. Also used by L1 PM sub-states
4			4	DD+	DIFFERENTIAL DATE 0+	4	PCIe TX+	
5	CD/DAT3	CARD DETECT/DATA LINE BIT3	5		NOT Used	5	PERST#	PE-Reset is a functional reset
6			6	DD-	DIFFERENTIAL DATE 0-	6	PCIe TX-	
7	CMD	COMMAND/RESPONSE	7		NOT Used	7		NOT Used
8	CD	CARD DETECT	8	CD	CARD DETECT	8	CD	CARD DETECT
9	VSS1	SUPPLY VOLTAGE GROUND	9	VSS1	Supply voltage ground	9	VSS1	Supply voltage ground
10			10	VSS4	Supply voltage ground	10	VSS4	Supply voltage ground
11			11	VDD2	Supply voltage(1.8V)	11	VDD2	Supply voltage(1.8V)
12	VDD	SUPPLY VOLTAGE	12	VDD1	Supply voltage(3.3V)	12	VDD1	Supply voltage(3.3V)
13			13	D1-	DIFFERENTIAL DATE 1-	13	PCIe RX-	
14	CLK	CLOCK	14		NOT Used	14		NOT Used
15			15	D1+	DIFFERENTIAL DATE 1+	15	PCIe RX+	
16	VSS2	SUPPLY VOLTAGE GROUND	16	VSS2	Supply voltage ground	16	VSS2	Supply voltage ground
17			17	VSS5	Supply voltage ground	17	VSS5	Supply voltage ground
18	DATO	DATA LINE BIT0	18	RCLK+		18	REFCLK+	PCIe Ref CLOCK
19			19			19	VDD3	Supply voltage(1.2V)-TBD
20	DAT1	DATA LINE BIT1	20	RCLK-		20	REFCLK-	PCIe Ref CLOCK
21	WP	WRITE PROTECT	21	WP	WRITE PROTECT	21	WP	WRITE PROTECT



NOTES :

- MATERIAL :
  - HOUSING:LCP UL94 S475 V-0, BLACK COLOR.
  - SHELL:STAINLESS STEEL SUS304.
  - CONTACT:COPPER ALLOY C7025.
- FINISH :
  - CONTACT: GOLD PLATING ON CONTACT AREA, MATTE TIN 80u"MIN ON SOLDERABLE AREA. 50u" MIN NICKEL PLATING OVERALL.
  - SHELL: 30U" MIN SOLDERABLE NICKEL PLATED OVER ALL.
- ELECTRICAL CHARACTERISTICS:
  - OPERATING VOLTAGE : 100V AC(rms)/DC.
  - CURRENT RATING : 0.5 A.
  - OPERATING TEMPERATURE: -25°C~+85°C.
  - CONTACT RESISTANCE: 100 m OHMS MAX.
  - INSULATION RESISTANCE: 1000M OHMS MIN. AT 250VDC.
  - DIELECTRIC WITHSTANDING VOLTAGE:500 VAC/1MINUTE.

PART.NO.: TW233-AN401-\*\*\*

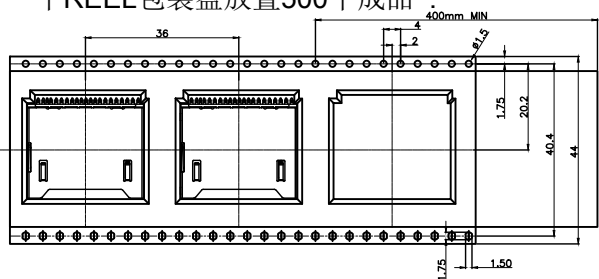
- 功能区镀金1U", 锡脚镀雾纯锡至少100U"
- 功能区镀金3U", 锡脚镀雾纯锡至少100U"
- 功能区镀金5U", 锡脚镀雾纯锡至少100U"
- 功能区镀金10U", 锡脚镀雾纯锡至少100U"
- 功能区镀金15U", 锡脚镀雾纯锡至少100U"
- 功能区镀金30U", 锡脚镀雾纯锡至少100U"

GENERAL TOLERANCE	DWG.NO.	TW233-AN401-00	PART.NO.	TW233-AN401-***	DRAWN	Ervin 2020.11.07	UNIT	mm	SCALE	1:1
x.±0.50	x. ± 5°	REV.	A	TITLE	SD7.0 No Push H2.95	CHECKED	东莞市欧联电子科技有限公司 DONGGUAN OLN ELECTRONICS TECHNOLOGY CO., LTD.			
.x±0.25	.x ± 2°	SIZE		SHEET	1 OF 2	APPROVED				
.xx±0.15	.xx ± 1°	A4								

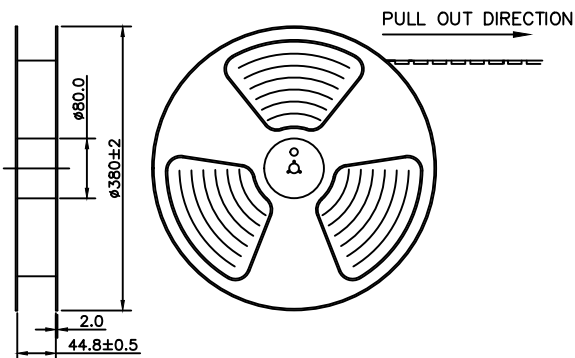
## 包装作业规范

### 包装作业图示及说明 (PACKING OPERATION DIAGRAM & INSTRUCTION)

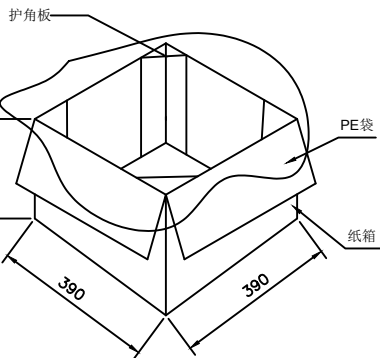
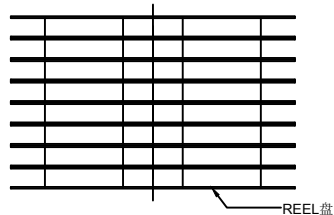
- 一.
- 1) 将成品一一放入REEL包装盘内,依同一方向放入.
  - 2) 包装时,如图所示.
  - 3) 一个REEL包装盘放置500个成品



- 二.
- 1) 装盘前先把前面空10pcs产品,然后再开始装盘,尾端也需空10pcs产品.
  - 2) 装满成品的REEL包装盘如下图所示.

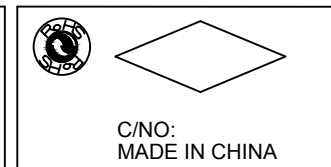


- 三.
- 1) 每箱装 6 盘REEL包装盘.
  - 2) 每箱放置3000PCS 的成品.



- 四.
- 1) 用TAPE将纸箱封实.

ITEM NO:	PCS	G.W.:	KGS
Q'TY.:		N.W.:	KGS
G.W.:		MEAS:	cm
N.W.:			
MEAS:			



#### 備註 (REMARK)

1. 若有未裝滿之零數箱,必須以緩衝材塞滿.

GENERAL TOLERANCE	DWG.NO.	TW233-AN401-00	PART.NO.	TW233-AN401-**	DRAWN	Ervin 2020.11.07
x.±0.50	REV.	A	TITLE	SD7.0 No Push H2.95	CHECKED	
.x±0.25	SIZE	A4	SHEET	2 OF 2	APPROVED	
.xx±0.15						

UNIT	mm	SCALE	1:1
东莞市欧联电子科技有限公司 DONGGUAN OLN ELECTRONICS TECHNOLOGY CO., LTD.			